

GIRLS' SWEET 16 CHAMPIONSHIP

Semifinals

OLDHAM COUNTY

VS.

WARREN EAST

March 27, 1993

VISITORS (Last Name, First)

NO.	WARREN EAST	Tot		3-POINT		FT		Rebounds			PF	TP	A	TO	BLK	S	TIME
		FG	FGA	FG	FGA	FT	FTA	OFF	DEF	TOT							
03	RATLIFF, DEANNA	2	4	0	0	0	0	2	1	3	2	4	2	0	0	1	14:10
30	ELROD, HEATHER	4	7	0	0	2	2	1	2	3	3	10	2	0	0	0	19:54
42	BRITT, JAMIE	8	15	0	0	1	2	4	10	14	2	17	0	1	1	3	23:45
14	SMITH, ALISON	4	7	0	2	0	0	0	4	4	1	8	3	3	0	1	22:50
20	MASSEY, MIRANDA	3	6	1	3	0	0	0	1	1	0	7	1	1	0	0	21:51
44	COLE, TRACY	0	1	0	0	0	0	0	1	1	3	0	0	1	0	0	7:49
12	HIBBITT, RHONDA	0	1	0	0	0	0	1	1	2	1	0	0	4	0	0	9:30
54	TALLEY, S.	2	2	0	0	3	4	1	4	5	2	7	2	0	0	0	11:58
34	FISHBACK, TRESIE	1	1	0	0	2	2	0	2	2	1	4	1	2	0	0	7:27
50	BARRICK, HOLLY	0	0	0	0	0	0	0	1	1	1	0	1	1	0	0	5:34
32	CROSLIN, NICHOLE	0	0	0	0	1	2	0	0	0	1	1	2	0	0	0	2:55
04	CRAIN, APRIL	2	4	1	1	0	0	0	1	1	0	5	0	0	0	0	3:32
22	LEE, AMANDA	0	0	0	0	0	0	0	0	0	1	0	0	0	0	1	1:43
41	KRISHER, ANGIE	0	1	0	0	0	0	0	0	0	0	0	0	0	0	0	3:31
10	JOHNSON, LAVONDA	1	1	0	0	0	0	0	0	0	1	2	0	2	0	1	3:31
TEAM REBOUNDS (INCLUDED IN TOTALS)																	
TOTALS		27	50	2	6	9	12	9	29	38	19	65	14	17	1	9	160
TOTAL FG	1st HALF	6/15	40.0%	2nd HALF	21/35	60.0% GAME		27	50	54.0%		DEADBALL					
3-POINT FG	1st HALF	0/4	0.0%	2nd HALF	2/2	100.0% GAME		2	6	33.3%		REBOUNDS				2	
FREE THROWS	1st HALF	0/0	0.0%	2nd HALF	9/12	75.0% GAME		9	12	75.0%							

HOME (Last Name, First)

NO.	OLDHAM COUNTY	Tot		3-POINT		FT		Rebounds			PF	TP	A	TO	BLK	S	TIME
		FG	FGA	FG	FGA	FT	FTA	OFF	DEF	TOT							
12	BRADSHAW, DAWN	2	11	0	2	0	0	2	2	4	0	4	3	3	0	0	20:09
30	HART, JODY	0	4	0	0	0	0	1	1	2	0	0	0	0	0	0	18:20
05	ELZY, KYRA	6	11	0	0	3	7	2	8	10	2	15	1	4	0	3	27:12
04	HOLCOMB, STACEY	1	4	0	2	2	2	2	1	3	3	4	0	2	0	1	14:31
11	HENORON, CINDY	1	5	1	3	0	0	0	1	1	2	3	0	3	0	2	27:58
23	FRANCIS, WENDY	0	5	0	4	0	0	1	0	1	1	0	1	1	0	0	14:09
40	ROBINSON, E.	1	2	0	0	0	0	1	0	1	2	2	0	0	0	1	11:12
24	CRAIGHYLE, J.	0	3	0	0	0	0	0	0	0	2	0	0	1	0	0	9:26
21	NAY, CINDY	2	5	0	3	0	0	0	0	0	0	4	0	1	0	0	4:02
31	DAILY, HEATHER	1	1	0	0	0	0	1	1	2	0	2	0	0	0	0	3:31
33	LANDES, SARAH	0	0	0	0	0	0	0	0	0	0	0	0	0	0	0	3:31
44	WILLIAMS, H.	0	0	0	0	2	2	2	0	2	0	2	0	0	0	0	3:14
45	KAMER, ANGIE	0	2	0	0	0	1	0	0	0	1	0	0	2	0	1	2:45
TEAM REBOUNDS (INCLUDED IN TOTALS)																	
TOTALS		14	53	1	14	7	12	14	15	29	13	36	5	19	0	8	160
TOTAL FG	1st HALF	3/13	23.1%	2nd HALF	11/40	27.5% GAME		14	53	26.4%		DEADBALL					
3-POINT FG	1st HALF	0/2	0.0%	2nd HALF	1/12	8.3% GAME		1	14	7.1%		Rebounds				1	
FREE THROWS	1st HALF	0/0	0.0%	2nd HALF	7/12	58.3% GAME		7	12	58.3%							

OFFICIALS: STEVE BAUER, LAURA PETRIE, ALT. - L. COOK

Technical: None

SCORE BY PERIODS

WARREN EAST	12	17	13	23	=	65
OLDHAM COUNTY	6	12	4	14	=	36

Attendance: 4,150

COMMENTS: POINTS OFF TURNOVERS

WARREN EAST 20 OLDHAM COUNTY

11 WARREN EAST

SECOND CHANCE POINTS

8 OLDHAM COUNTY

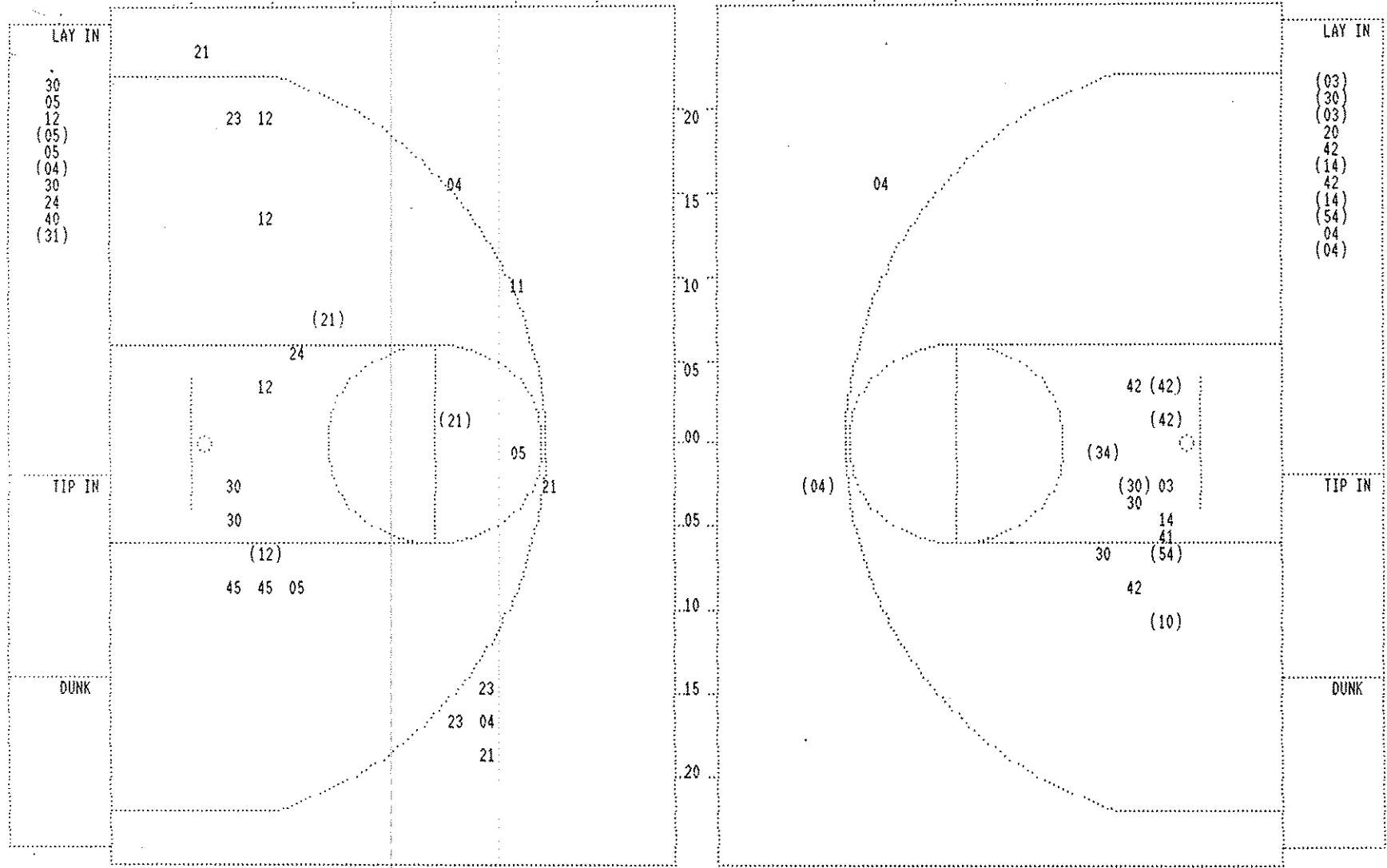
8

Player	Team	OLDHAM COUNTY	Time	Score	WARREN EAST	Player	Team
ELZY, KYRA, HENDRON, CINDY		FRANCIS, WENDY, CRAIGHYLE, J., HART, JODY			FISHBACK, TRESIE, SMITH, ALISON, BRITT, JAMIE, TALLEY, S., HIBBITT, RHONDA		
			4 7:45	22-44*	4 ft Lane Turnaround by FISHBACK, TRESIE	1-1	100% 20-39 51.2%
					Assist by TALLEY, S.	2	10
			4 6:57	22-46*	4 ft Lane Turnaround by BRITT, JAMIE	8-15	53.3% 21-40 52.5%
					Assist by SMITH, ALISON	3	11
1	5	Foul on FRANCIS, WENDY	4 6:45				
		Sub In: HOLCOMB, STACEY Out: FRANCIS, WENDY	4 6:45				
		Sub In: ROBINSON, E. Out: HART, JODY	4 6:45				
2	6	Foul on ROBINSON, E.	4 6:32				
		Sub In: BRADSHAW, DAWN Out: HOLCOMB, STACEY	4 6:32	22-47*	BRITT, JAMIE, 2 Free Throws made 1st missed 2nd	1-2	50.0% 4-6 66.6%
			4 6:15	22-49*	Layup Off Fast Break by SMITH, ALISON	4-7	57.1% 22-41 53.6%
			4 5:50				
			4 5:47		Foul on TALLEY, S.	1	5
			4 5:47		Sub In: RATLIFF, DEANNA Out: SMITH, ALISON		
			4 5:34		Foul on BRITT, JAMIE	2	6
2-5	40.0%	2-5 40.0%	4 5:34	*23-49			
		ELZY, KYRA, 2 Free Throws missed 1st made 2nd	4 5:34		Sub In: BARRICK, HOLLY Out: BRITT, JAMIE		
			4 5:09	23-51*	Follow Rebound by TALLEY, S.	1-1	100% 23-43 53.4%
2-11	18.1%	11-39 28.2%	4 5:06	*25-51			
		6 ft Left Side Jump shot by BRADSHAW, DAWN	4 5:00		Player Control Foul on HIBBITT, RHONDA	1	7
			4 4:47				
		REB: 21 A: 5 BLK: 0 TO: 16 PF: 6			REB: 31 A: 11 BLK: 1 TO: 13 PF: 7		
		S: 6 FT: 2-5 40.0% FG: 11-39 28.2%	No. 2 OLDHAM COUNTY	T I M E - O U T	S: 7 FT: 4-6 66.6% FG: 23-43 53.4%		
2	7	Foul on CRAIGHYLE, J.	4 4:33				
		Sub In: FRANCIS, WENDY Out: CRAIGHYLE, J.	4 4:33	25-53*	FISHBACK, TRESIE, 1 & Bonus made both	2-2	100% 6-8 75.0%
			4 4:16		Foul on TALLEY, S.	2	8
			4 4:16		Sub In: CROSLIN, NICHOLE Out: RATLIFF, DEANNA		
3-7	42.8%	3-7 42.8%	4 4:16	*26-53			
		ELZY, KYRA, 1 & Bonus made 1st missed 2nd	4 4:02		Sub In: CRAIN, APRIL Out: HIBBITT, RHONDA		
		Sub In: NAY, CINDY Out: HENDRON, CINDY	4 4:02				
		Sub In: HOLCOMB, STACEY Out: ROBINSON, E.	4 4:02				
			4 3:49	26-55*	6 ft Lane SHOT Off Fast Break by TALLEY, S.	2-2	100% 24-44 54.5%
					Assist by BARRICK, HOLLY	1	12
3	8	Foul on HOLCOMB, STACEY	4 3:31				
			4 3:31				
		REB: 22 A: 5 BLK: 0 TO: 16 PF: 8			REB: 35 A: 12 BLK: 1 TO: 14 PF: 8		
		S: 7 FT: 3-7 42.8% FG: 11-43 25.5%	No. 3 OLDHAM COUNTY	T I M E - O U T	S: 7 FT: 6-8 75.0% FG: 24-44 54.5%		
		Sub In: DAILY, HEATHER Out: BRADSHAW, DAWN	4 3:31		Sub In: LEE, AMANDA Out: BARRICK, HOLLY		
		Sub In: LANDES, SARAH Out: FRANCIS, WENDY	4 3:31		Sub In: KRISHER, ANGIE Out: FISHBACK, TRESIE		
			4 3:31		Sub In: JOHNSON, LAVONDA Out: CRAIN, APRIL		
			4 3:31		Subs In: CRAIN, APRIL, BARRICK, HOLLY		
			4 3:31		Out: LEE, AMANDA, CROSLIN, NICHOLE		
			4 3:23	26-56*	TALLEY, S., 2 Free Throws made both	3-4	75.0% 8-10 80.0%
			4 3:23		Sub In: LEE, AMANDA Out: TALLEY, S.		
		Sub In: WILLIAMS, H. Out: ELZY, KYRA	4 3:14				
			4 3:08		Foul on JOHNSON, LAVONDA	1	9
2-2	100%	5-9 55.5%	4 3:08	*28-56			
		HOLCOMB, STACEY, 1 & Bonus made both	4 2:45				
		Sub In: KAMER, ANGIE Out: HOLCOMB, STACEY	4 2:23	*30-56			
1-1	100%	12-48 25.0%	4 2:22		Foul on BARRICK, HOLLY	1	10
		Follow Rebound by DAILY, HEATHER	4 2:10		Foul on LEE, AMANDA	1	11
			4 2:10		Sub In: CROSLIN, NICHOLE Out: LEE, AMANDA		
0-1	00.0%	5-10 50.0%	4 2:10				
		KAMER, ANGIE, 1 & Bonus missed 1st	4 2:02	30-58*	Layup Off Fast Break by CRAIN, APRIL	1-3	33.3% 25-48 52.0%
					Assist by CROSLIN, NICHOLE	1	13
			4 1:44		Foul on CROSLIN, NICHOLE	1	12
2-2	100%	7-12 58.3%	4 1:44	*32-58			
		WILLIAMS, H., 1 & Bonus made both	4 1:29	32-60*	10 ft Right Base Line Jump shot by JOHNSON, LAVONDA	1-1	100% 26-49 53.0%
1-4	25.0%	13-51 25.4%	4 1:14	*34-60			
		14 ft Lane Jump shot by NAY, CINDY	4 1:03	34-63*	3 pt 22 ft Straight Away Jump shot by CRAIN, APRIL	2-4	50.0% 27-50 54.0%
					Assist by CROSLIN, NICHOLE	2	14
1	9	Foul on KAMER, ANGIE	4 0:30				
			4 0:30	34-64*	CROSLIN, NICHOLE, 2 Free Throws missed 1st made 2nd	1-2	50.0% 9-12 75.0%
			4 0:30		Sub In: LEE, AMANDA Out: CRAIN, APRIL		
2-5	40.0%	14-53 26.4%	4 0:05	*36-64			
		10 ft Right Side Jump shot by NAY, CINDY					

Player	Team	OLDHAM COUNTY
BRADSHAW, DAWN	HART	JODY, ELZY, KYRA, HOLCOMB, STACEY, HENDRON, CINDY
1	1	Bail to LADY COLONELS Foul on HENDRON, CINDY
6-8	75.0%	9-28 32.1% Layup Off Fast Break by ELZY, KYRA
1-2	50.0%	10-32 31.2% Driving Layup by HOLCOMB, STACEY Assist by BRADSHAW, DAWN
3	5	Foul on HENDRON, CINDY
2	2	
		Sub In: FRANCIS, WENDY Out: BRADSHAW, DAWN
		Sub In: CRAIGHYLE, J. Out: HOLCOMB, STACEY
2	3	Foul on ELZY, KYRA
1	4	Foul on CRAIGHYLE, J.

Time	Score	WARREN EAST	Player	Team
			RATLIFF, DEANNA, ELROD, HEATHER, BRITT, JAMIE, SMITH, ALISON, MASSEY, MIRANDA	
3 7:45				
3 7:44	18-31*	2 ft Lane Jump shot by BRITT, JAMIE Assist by ELROD, HEATHER	7-10	70.0% 14-25 56.0%
3 6:51	18-33*	Follow Rebound by RATLIFF, DEANNA	1-2	50.0% 15-28 53.5%
3 6:26	18-35*	Driving Layup by ELROD, HEATHER	3-5	60.0% 16-29 55.1%
3 5:44	18-37*	Driving Layup by RATLIFF, DEANNA	2-3	66.6% 17-30 56.6%
3 5:33				
		REB: 11 A: 4 BLK: 0 TO: 9 PF: 1 S: 4 FT: 1-3 33.3% FG: 8-25 32.0%		
		No. 1 OLDHAM COUNTY		
		T I M E - O U T		
		REB: 21 A: 6 BLK: 0 TO: 6 PF: 0 S: 3 FT: 2-2 100% FG: 17-30 56.6%		
3 5:27		Foul on RATLIFF, DEANNA	2	1
3 4:15	*20-37			
3 3:14		Foul on ELROD, HEATHER	2	2
3 3:11	*22-37			
3 2:52		Sub In: COLE, TRACY Out: RATLIFF, DEANNA		
3 2:52	22-39*	3 ft Lane Turnaround by ELROD, HEATHER Assist by SMITH, ALISON	4-6	66.6% 18-34 52.9%
3 2:05	22-41*	Layup Off Fast Break by SMITH, ALISON	3-6	50.0% 19-35 54.2%
3 1:43		Foul on ELROD, HEATHER	3	3
3 1:43		Sub In: HIBBITT, RHONDA Out: SMITH, ALISON		
3 1:43		Sub In: TALLEY, S. Out: ELROD, HEATHER		
3 1:15		Foul on COLE, TRACY	3	4
3 1:15		Sub In: FISHBACK, TRESIE Out: COLE, TRACY		
3 1:02				
3 0:40		Sub In: SMITH, ALISON Out: MASSEY, MIRANDA		
3 0:40	22-42*	TALLEY, S., 2 Free Throws made 1st missed 2nd	1-2	50.0% 3-4 75.0%

SECOND HALF SHOT CHART Produced by the KHSAA Sweet Sixteen Stat Crew with FINAL III - a Product of LEXICON SPORTS™



OLDHAM COUNTY					
Player			Player		
12 - BRADSHAW,	1 / 5	20.0%	21 - NAY, CINDY	2 / 5	40.0%
30 - HART, JODY	0 / 4	0.0%	23 - FRANCIS, W	0 / 3	0.0%
05 - ELZY, KYRA	1 / 5	20.0%	24 - CRAIGHYLE,	0 / 2	0.0%
04 - HOLCOMB, S	1 / 3	33.3%	31 - DAILY, HEA	1 / 1	100.0%
11 - HENDRON, C	0 / 1	0.0%	40 - ROBINSON,	0 / 1	0.0%
Layups	1-9 Ft	10-15 Ft	Over 15 Ft	3 Pointers	Total
3 / 10	1 / 8	2 / 3	0 / 1	0 / 10	6 / 32
30.0%	12.5%	66.7%	0.0%	0.0%	18.8%

WARREN EAST					
Player			Player		
03 - RATLIFF, D	2 / 3	66.6%	04 - CRAIN, APR	2 / 4	50.0%
30 - ELROD, HEA	2 / 4	50.0%	10 - JOHNSON, LA	1 / 1	100.0%
42 - BRITT, JAN	2 / 6	33.3%	34 - FISHBACK, T	1 / 1	100.0%
14 - SMITH, ALI	2 / 3	66.6%	41 - KRISHER, A	0 / 1	0.0%
20 - MASSEY, MI	0 / 1	0.0%	54 - TALLEY, S.	2 / 2	100.0%
Layups	1-9 Ft	10-15 Ft	Over 15 Ft	3 Pointers	Total
7 / 11	5 / 12	1 / 1	0 / 1	1 / 1	14 / 26
63.6%	41.7%	100.0%	0.0%	100.0%	53.8%

Official Boxscore * OFFICIAL FIRST HALF *

Date: 03-27-93 Site:GIRLS STATE TOURNEY GM 14

VISITORS (Last Name, First)

NO.	WARREN EAST	Tot FG		3-POINT		FT	FTA	Rebounds			PF	TP	A	TO	BLK	S	TIME	
		FG	FGA	FG	FGA			OFF	DEF	TOT								
03	RATLIFF, DEANNA	0	1	0	0	0	0	0	1	1	1	0	2	0	0	0	7:31	
30	ELROD, HEATHER	2	3	0	0	2	2	1	1	2	1	6	1	0	0	0	13:37	
42	BRITT, JAMIE	6	8	0	0	0	0	2	6	8	1	12	0	1	0	1	13:19	
14	SMITH, ALISON	2	4	0	2	0	0	0	2	2	1	4	1	2	0	0	13:40	
20	MASSEY, MIRANDA	3	5	1	3	0	0	0	1	1	0	7	1	1	0	2	14:31	
44	COLE, TRACY	0	1	0	0	0	0	0	1	1	2	0	0	1	0	0	6:12	
12	HIBBITT, RHONDA	0	1	0	0	0	0	0	0	0	0	0	0	1	0	0	3:49	
54	TALLEY, S.	0	0	0	0	0	0	0	1	1	0	0	1	0	0	0	5:38	
34	FISHBACK, TRESIE	0	0	0	0	0	0	0	0	0	1	0	1	0	0	0	1:43	
TEAM REBOUNDS (INCLUDED IN TOTALS)																		
TOTALS		13	24	1	5	2	2	3	13	16	7	29	7	6	0	3	80	
TOTAL FG	1st HALF	6/15	40.0%	2nd HALF	7/9	77.8%	GAME		13/24	54.2%	DEADBALL		REBOUNDS		0			
3-POINT FG	1st HALF	0/4	0.0%	2nd HALF	1/1	100.0%	GAME		1/5	20.0%	REBOUNDS		0					
FREE THROWS	1st HALF	0/0	0.0%	2nd HALF	2/2	100.0%	GAME		2/2	100.0%	REBOUNDS		0					

HOME (Last Name, First)

NO.	OLDHAM COUNTY	Tot FG		3-POINT		FT	FTA	Rebounds			PF	TP	A	TO	BLK	S	TIME	
		FG	FGA	FG	FGA			OFF	DEF	TOT								
12	BRADSHAW, DAWN	1	6	0	1	0	0	1	2	3	0	2	2	1	0	0	11:33	
30	HART, JODY	0	0	0	0	0	0	0	1	1	0	0	0	0	0	0	9:05	
05	ELZY, KYRA	5	6	0	0	1	3	0	4	4	1	11	1	3	0	2	14:26	
04	HOLCOMB, STACEY	0	1	0	0	0	0	0	0	0	2	0	0	1	0	0	5:34	
11	HENDRON, CINDY	1	4	1	2	0	0	0	1	1	0	3	0	1	0	1	16:00	
23	FRANCIS, WENDY	0	2	0	1	0	0	1	0	1	0	0	1	0	0	0	10:26	
40	ROBINSON, E.	1	1	0	0	0	0	0	0	0	1	2	0	0	0	1	8:29	
24	CRAIGHYLE, J.	0	1	0	0	0	0	0	0	0	0	0	0	0	0	0	4:27	
TEAM REBOUNDS (INCLUDED IN TOTALS)																		
TOTALS		8	21	1	4	1	3	2	8	10	4	18	4	8	0	4	80	
TOTAL FG	1st HALF	3/13	23.1%	2nd HALF	5/8	62.5%	GAME		8/21	38.1%	DEADBALL		REBOUNDS		0			
3-POINT FG	1st HALF	0/2	0.0%	2nd HALF	1/2	50.0%	GAME		1/4	25.0%	REBOUNDS		0					
FREE THROWS	1st HALF	0/0	0.0%	2nd HALF	1/3	33.3%	GAME		1/3	33.3%	REBOUNDS		0					

OFFICIALS: STEVE BAUER, LAURA PETRIE, ALT. - L. COOK
 Technicals: None

SCORE BY PERIODS

WARREN EAST	12	17	=	29
OLDHAM COUNTY	6	12	=	18

Attendance: 4,150

COMMENTS: POINTS OFF TURNOVERS

WARREN EAST 13 OLDHAM COUNTY

SECOND CHANCE POINTS

5 WARREN EAST 4 OLDHAM COUNTY

2

Produced by the KHSAA Sweet Sixteen Stat Crew with FINAL III - a Product of LEXICON SPORTS™

WARREN EAST "LADY RAIDERS" vs OLDHAM COUNTY "LADY COLONELS"
 1st Half Play by Play

Player	Team	OLDHAM COUNTY
BRADSHAW, DAWN ,HART, JODY,ELZY, KYRA,HOLCOMB, STACEY,HENDRON, CINDY Ball to LADY COLONELS		
1	1	Player Control Foul on ELZY, KYRA
Sub In: FRANCIS, WENDY Out: HOLCOMB, STACEY		
1-2	50.0%	1-8 12.5% 6 ft Lane Jump shot by ELZY, KYRA Assist by FRANCIS, WENDY
2-3	66.6%	2-9 22.2% 4 ft Lane Turnaround by ELZY, KYRA Assist by BRADSHAW, DAWN
3-4	75.0%	3-10 30.0% Layup Off Fast Break by ELZY, KYRA
Sub In: ROBINSON, E. Out: ELZY, KYRA		

PAGE : 1

Tip off at 11:30 a.m. on 03/27/93 at GIRLS STATE TOURNEY GM 14
 Produced by the KHSAA Sweet Sixteen Stat Crew with FINAL III - a Product of LEXIC

Time	Score	WARREN EAST	Player	Team
RATLIFF, DEANNA,ELROD, HEATHER ,BRITT, JAMIE,SMITH, ALISON,MASSEY, MIRANDA				
1 7:23		Foul on BRITT, JAMIE	1	1
1 6:53	0-2*	Follow Rebound by ELROD, HEATHER	1-1	100% 1-3 33.3%
1 6:27				
1 6:18	0-4*	Turnaround Layup by BRITT, JAMIE Assist by RATLIFF, DEANNA	1-2	50.0% 2-4 50.0%
1 5:38	0-6*	Layup Off Fast Break by MASSEY, MIRANDA	1-2	50.0% 3-6 50.0%
1 5:23				
1 2:40	0-8*	Layup Off Fast Break by BRITT, JAMIE Assist by SMITH, ALISON	2-5	40.0% 4-12 33.3%
1 2:24	*2-8		1	2
1 2:10	2-10*	4 ft Lane Turnaround by BRITT, JAMIE Assist by RATLIFF, DEANNA	3-6	50.0% 5-13 38.4%
1 1:53	*4-10		2	3
1 1:36	*6-10			
1 1:22	6-12*	2 ft Lane Jump shot by BRITT, JAMIE Assist by MASSEY, MIRANDA	4-7	57.1% 6-14 42.8%
1 0:29		Foul on RATLIFF, DEANNA	1	4
1 0:29		Sub In: COLE, TRACY Out: SMITH, ALISON	1	2
1 0:29		Sub In: HIBBITT, RHONDA Out: RATLIFF, DEANNA		
1 0:29				

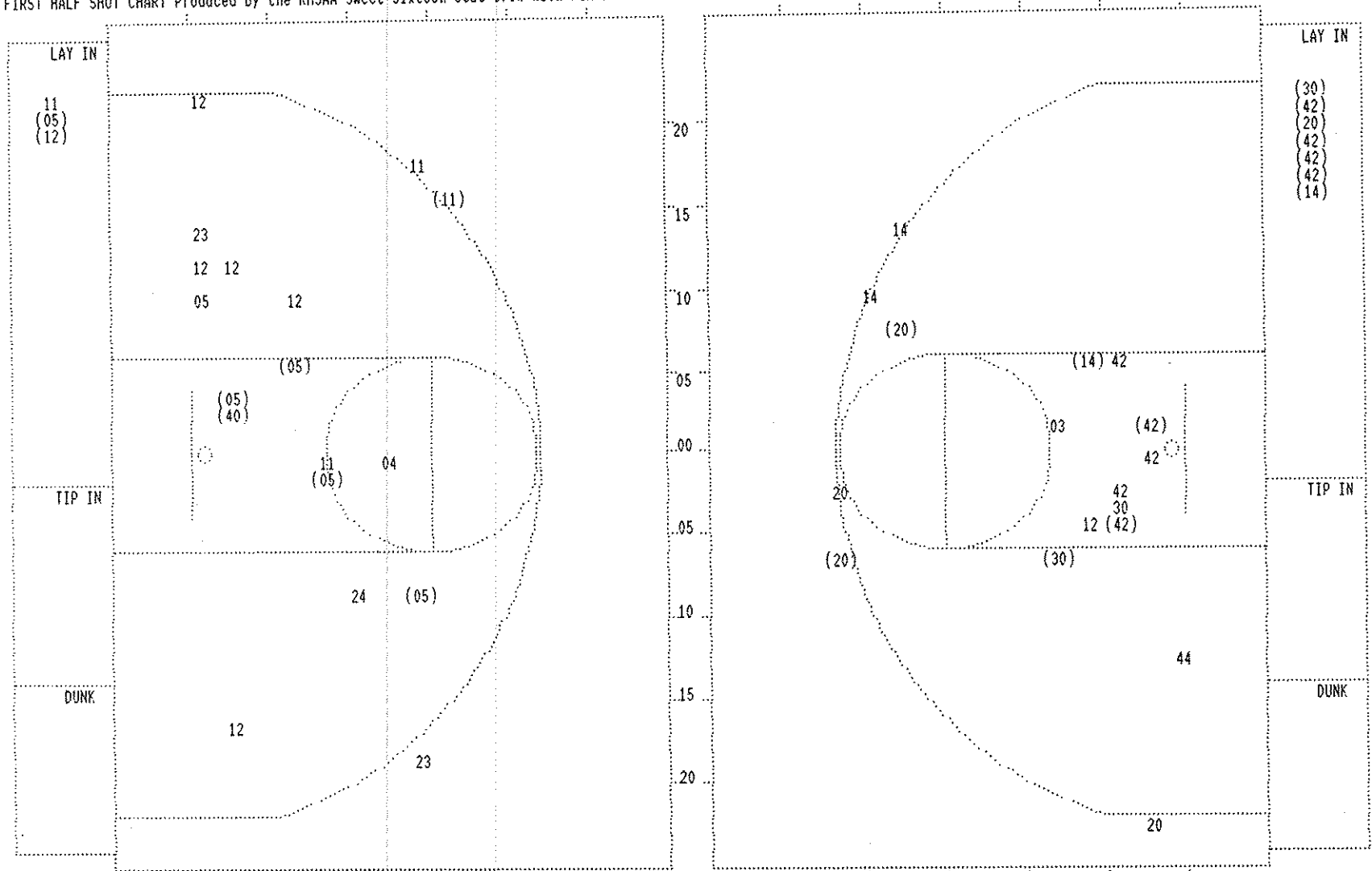
WARREN EAST "LADY RAIDERS" vs OLDHAM COUNTY "LADY COLONELS"
1st Half Play by Play

Tip off at 11:30 a.m. on 03/27/93 at GIRLS STATE TOURNEY GM 14
Produced by the KHSAA Sweet Sixteen Stat Crew with FINAL III - a Product of LEXICC

PAGE : 2

Player	Team	OLDHAM COUNTY	Time	Score	WARREN EAST	Player	Team
CRAIGMYLE, J.	HENDRON, CINDY	FRANCIS, WENDY, ROBINSON, E., HART, JODY			COLE, TRACY, MASSEY, MIRANDA, BRITT, JAMIE, ELROD, HEATHER, HIBBITT, RHONDA		
			2 7:48	6-14*	Ball to LADY RAIDERS	5-8	62.5% 7-16 43.7%
					Turnaround Layup by BRITT, JAMIE	1	5
					Assist by ELROD, HEATHER	1	3
			2 6:55		Foul on ELROD, HEATHER		
			2 6:55				
1-3	33.3%	4-14 28.5%					
1		3					
		Sub In: ELZY, KYRA Out: HART, JODY					
		3 pt 21 ft Right Side Jump shot by HENDRON, CINDY					
		Assist by ELZY, KYRA					
			2 6:17	9-16*	Follow Rebound by BRITT, JAMIE	6-9	66.6% 8-18 44.4%
			2 6:09		Sub In: SMITH, ALISON Out: MASSEY, MIRANDA		
			2 6:09	9-18*	7 ft Left Side Jump shot by SMITH, ALISON	1-3	33.3% 9-19 47.3%
			2 5:38		Foul on COLE, TRACY	1	4
			2 5:38	*10-18			
1-2	50.0%	1-2 50.0%			Sub In: TALLEY, S. Out: BRITT, JAMIE		
			2 5:38				
		ELZY, KYRA, 2 Free Throws made 1st missed 2nd					
4-5	80.0%	5-16 31.2%					
1		2					
		14 ft Left Angle Jump shot by ELZY, KYRA					
		Foul on ROBINSON, E.					
			2 5:30	*12-18			
			2 4:40		Sub In: MASSEY, MIRANDA Out: HIBBITT, RHONDA		
			2 4:40				
		Sub In: BRADSHAW, DAWN Out: CRAIGMYLE, J.					
		Sub In: HOLCOMB, STACEY Out: FRANCIS, WENDY					
			2 4:40				
			2 4:40	12-20*	ELROD, HEATHER, 2 Free Throws made both	2-2	100% 2-2 100%
			2 4:40		Sub In: FISHBACK, TRESIE Out: ELROD, HEATHER		
			2 4:25	12-22*	Layup Off Fast Break by SMITH, ALISON	2-4	50.0% 10-20 50.0%
			2 3:52	*14-22			
1-1	100%	6-17 35.2%					
2		4					
		4 ft Lane Jump shot by ROBINSON, E.					
		Assist by BRADSHAW, DAWN					
			2 3:20	14-24*	18 ft Left Angle Jump shot by MASSEY, MIRANDA	2-4	50.0% 11-21 52.3%
					Assist by FISHBACK, TRESIE	1	6
			2 2:57		Foul on FISHBACK, TRESIE	1	5
			2 2:57		Sub In: BRITT, JAMIE Out: FISHBACK, TRESIE		
			2 2:50	*16-24			
			2 2:26		Foul on COLE, TRACY	2	6
			2 2:17				
			2 2:17		Sub In: ELROD, HEATHER Out: COLE, TRACY		
			2 2:17	16-26*	8 ft Lane Jump shot by ELROD, HEATHER	2-3	66.6% 12-23 52.1%
					Assist by TALLEY, S.	1	7
			2 1:43				
			2 1:43				
			2 1:13	16-29*	3 pt 21 ft Circle Jump shot by MASSEY, MIRANDA	3-5	60.0% 13-24 54.1%
			2 1:07				
		REB: 10 A: 4 BLK: 0 TO: 8 PF: 4					
		S: 3 FT: 1-2 50.0% FG: 7-20 35.0%					
		No. 1 OLDHAM COUNTY			T I M E - O U T		
			2 1:07				
			2 0:50	*18-29			
			2 0:50		Foul on SMITH, ALISON	1	7
			2 0:50				
5-6	83.3%	8-21 38.0%					
		Sub In: CRAIGMYLE, J. Out: BRADSHAW, DAWN					
		7 ft Lane Driving by ELZY, KYRA					
1-3	33.3%	1-3 33.3%					
		ELZY, KYRA, 1 Free Throw missed					

FIRST HALF SHOT CHART Produced by the KHSAA Sweet Sixteen Stat Crew with FINAL III - a Product of LEXICON SPORTS™



OLDHAM COUNTY				
Player			Player	
12 - BRADSHAW,	1 / 6	16.6%	24 - CRAIGHYLE,	0 / 1 0.0%
05 - ELZY, KYRA	5 / 6	83.3%	40 - ROBINSON,	1 / 1 100.0%
04 - HOLCOMB, S	0 / 1	0.0%		
11 - HENDRON, C	1 / 4	25.0%		
23 - FRANCIS, W	0 / 2	0.0%		
Layups	1-9 Ft	10-15 Ft	Over 15 Ft	3 Pointers Total
2 / 3	4 / 5	1 / 8	0 / 1	1 / 4 8 / 21
66.7%	80.0%	12.5%	0.0%	25.0% 38.1%

WARREN EAST				
Player			Player	
03 - RATLIFF, D	0 / 1	0.0%	12 - HIBBITT, R	0 / 1 0.0%
30 - ELROD, HEA	2 / 3	66.6%	44 - COLE, TRAC	0 / 1 0.0%
42 - BRITT, JAM	6 / 9	66.6%		
14 - SMITH, ALI	2 / 4	50.0%		
20 - MASSEY, MI	3 / 5	60.0%		
Layups	1-9 Ft	10-15 Ft	Over 15 Ft	3 Pointers Total
7 / 7	4 / 10	0 / 1	1 / 5	13 / 24
100.0%	40.0%	0.0%	20.0%	54.2%